



## Travel GSH Pte Ltd

101 Upper Cross Street People's Park Centre B1-12 Singapore 058357

Tel: 6536 3933 Fax: 6534 3633

Email: [Jessie@travelgsh.com](mailto:Jessie@travelgsh.com) / [yen@travelgsh.com](mailto:yen@travelgsh.com)

# KOREA

## 8DAYS 6NIGHT KOREA & JEJU

TOUR CODE : 8D6N K8MJ

### TOUR HIGHLIGHT

- ♥ HOT SPRING ♥
- ♥ GANGWON PROVINCE ♥
- ♥ EVERLAND THEME PARK ♥
- ♥ JEJU ISLAND ♥
- ♥ SEONG SUNRISE PEAK ♥

**Itinerary Subject To Change**  
特殊情况下行程会有少许更改

## 8DAYS 6NIGHT KOREA MAGICAL & JEJU

### Day 1: SINGAPORE QKOREA

Assemble at Singapore Changi International Airport for a flight to Korea!

### Day 2: Nami Island / Hot Spring Experience / Overnight in Gangwon Province (Breakfast on Board / Lunch / Dinner)

Welcome to Korea! On arrival, you will be greeted by our professional guide and proceed to **Nami Island**, the famous filming place of 'Winter Sonata'. The scenery is especially beautiful in winter. This evening, experience Korea's therapeutic **Hot Spring!** It not only relieves stress but also serves as a fun, healthy travel experience especially on a cold snowy day. Don't forget to bring your own swimwear & swimming cap to enjoy the facilities!

### Day 3: Skiing Activities (equipment & jacket included) / Gondola Ride (Subject to weather conditions)

(Breakfast / Lunch at own expenses in Ski Resort / Dinner)

This morning, brace yourself for a wondrous & exhilarating **Skiing** & snow experience on this special day. Take your time to master the strokes, or simply build your own snowman! For hygienic purposes, please use your own ski gloves. Afternoon, enjoy the fabulous opportunity to ride a **Gondola** ride to the mountain top for some photographic memories.

### Day 4: Everland Theme Park with Passport Tickets / Transfer to domestic airport for flight to Q Jeju / Yongduam Rock / Overnight in Jeju

(Breakfast / Lunch at own expenses / Dinner)

Visit Korea's largest theme park, **Everland**. All dressed up in festivity, & excitement all year round, the park attracts everyone with its exciting rides and beautiful sceneries. Afterwards, transfer to Gimpo airport for our domestic flight to **Jeju Island**, popularly known as 'Honeymoon Island'. Upon arrival visit the famous landmark of Jeju Island, **Yongduam Rock**, an unusual rock in the shape of a dragon with its mouth open ready to roar.

### Day 5: Seongsan Sunrise Peak / Tangerine Farm / Rape Seed Flower Farm / Glass Castle / Horseback Riding / Joanne Bear Museum / Trick Art Museum / Mysterious Road / Overnight in Jeju

(Breakfast / Lunch / Dinner)

Today, start your tour with a visit to **Seongsan Sunrise Peak**, an extinct volcano to enjoy its fantastic scenery! Continue to a **Tangerine Farm** where you can learn to harvest tangerines; & onwards to the beautiful yellow blankets of **Rape Seed Flower Farm** that cover most of Jeju Island's fields from winter. Get ready next for some **Horse-back Riding** fun before heading to **Joanne Bear Museum**. Situated in a beautiful country house with lovely view of the sea, the museum offers Korean characteristic bears from Bae Yoon Jun to K-Pop star Kim Hyun Joong. See how many character bears you can identify! Proceed to the **Glass Castle**, featuring a kaleidoscope of colours with their exquisite displays made of glass. **Trick Art Museum** offers an optical illusion and provides an interesting perspective with 3-dimensional paintings and exhibits. Have fun posing and get your cameras clicking! Continue with a drive to experience the phenomenon of Jeju at **Mysterious Road**. Drive uphill with the vehicle engine off!



# Travel GSH Pte Ltd

Day 6: Transfer to Jeju Airport for flight to Singapore. **Visit the World with Free Pass Tickets / Dongdaemun Wholesale Market Overnight in Seoul** (Breakfast / Lunch / Dinner at own expense)

Email: [jesie@travelgsh.com](mailto:jesie@travelgsh.com) / [yen@travelgsh.com](mailto:yen@travelgsh.com)

After breakfast, bid farewell to Jeju Island & transfer to airport for your flight back to the main Peninsula. **Lotte World** is up next and it needs no introduction. Be dazzled by this exciting theme park and enjoy to

your fullest with your Free Pass Tickets. This evening, enjoy Singaporean's favourite pastime – Shopping! Here at the famous **Dongdaemun**, Korea's largest wholesale market, it's a shopper's paradise!

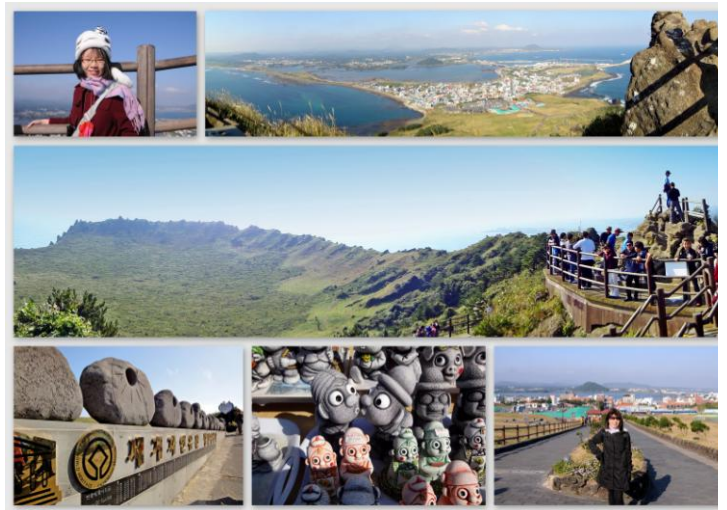
## Day 7: Gyeongbuk Palace / Drive pass Presidential Blue House / Ginseng Showroom / Amethyst Factory / Local Cosmetic Shop / Shinchon University Streets / Non-Verbal Artistic Comedy "Drawing Show" / Overnight in Seoul (Breakfast / Lunch / Dinner)

Begin our Seoul City tour at **Gyeongbok Palace**, the main & largest palace of the last royal Imperial dynasty of Korean antiquity followed by a drive pass of **Presidential Blue House**. Following, a stop at the Ginseng showroom for this widely acclaimed natural produce of Korea. Popularly known as 'Panax' meaning 'All Heal' in Greek, this medicinal herb is therefore a Must on your shopping list. After, we visit the **Amethyst factory** which showcases this extravagant violet stone from the stalactites in the mountains of Korea. **Korean Cosmetics** are all the rage now a stop at a multi label shop to top up your supplies! Experience shopping at **Shinchon University Street**, well known for its unique street culture for the youngsters of Korea. This evening, look forward to the talented artists in the brilliantly concept "**Drawing Show**".

## Day 8: Herb Huginbao Showroom / Local Provision shop / Incheon Airport (Breakfast)

Last day in Korea! After breakfast, proceed to **Korean Herb Huginbao Showroom**. Next, stop by the **Local Provision Shop** where you have opportunity to try out & purchase local products & souvenirs before heading to the airport for your flight home. Hope you had a wonderful experience in Korea!

**\*\*Due to unforeseen circumstances, sequence of the above itinerary subject to change without prior notice.**



KOREA  
TOURISM  
ORGANIZATION  
한국관광공사



## 韩国

### 8天6晚 韩东神奇&济州岛游

TOUR CODE : 8D6N K8MJ

#### TOUR HIGHLIGHT

- ♥ 温泉体验 ♥
- ♥ 爱宝乐园 ♥
- ♥ 金浦 ♥
- ♥ 济州岛 ♥
- ♥ 泰迪熊博物馆 ♥

Itinerary Subject To Change  
特殊情况下行程会有少许更改

## 8天6晚 韩冬神奇♥济州岛游

### 第一天 新加坡 Q 韩国

集合于新加坡樟宜国际机场，乘搭豪华客机飞往韩国。祝您有一个愉快的航程！

### 第二天 首尔 / 南怡岛/温泉体验 (机上用早餐/午/晚餐)

首先我们前往韩剧”冬季恋歌”拍摄地点，南怡岛。乘渡船到位于江原道春川的南怡岛，是一个四季旅游的热点，处处是草地和漫步小道。而周环绕的栗树，杨树等，犹如俨然天然屏风。电视剧中的男女主人翁合骑二人自行车的镜头就是在这里拍摄的。让您能勾起对剧中难忘的美丽回忆。而後前往体验自然温泉区，享用各种独特的温泉设施，松弛您的身心。不要忘记自备您的泳衣和泳帽！

### 第三天 滑雪度假村(包雪具，雪衣和雪裤) / 空中缆车 (早餐/晚餐)

在冬天来韩国旅游，行程不可缺少的就是滑雪！在教练的指导下由开始学穿鞋到练习走路煞车跌倒，滑行，让您尝试一下前所未有的滑雪之乐，如果滑累还可在此堆雪人或打雪仗也是一种不同的感受。此外您可搭乘空中缆车，到山顶欣赏银色山峦，景色极致优美。您可以在山顶悠闲喝一杯咖啡，欣赏滑雪场的景色。

### 第四天 爱宝乐园(含门票及全日券)/金浦 Q 济州岛(早/晚餐)

早餐后，驱车前往游览世界第七大游乐场，在韩国最有代表性的主题公园，爱宝乐园玩乐。此乐园不仅考虑年轻人喜欢追求刺激，惊险的游乐项目，也兼顾到儿童与年长者只想(看)不敢(玩)的特性，为家庭式的游乐园，可说是四季欢乐的国度！接着一起到国内机场转搭国内班机到韩国蜜月胜地济州岛。一个充满神话，集浪漫，神秘，美丽，独特传统文化和绮丽於一身的岛。也是韩国最受欢迎的渡假胜地。

### 第五天 城山日出峰 / 琉璃城堡 / 桔子园 / 油菜花园 / 骑马 / Joanne 泰迪熊博物馆 / 幻觉艺术博物馆/神奇之路 (早/午/晚)

享用早餐后，前往城山日出峰，世界最大的突出于海岸的火山口，攀登30分钟左右到山顶唯一一片宽阔的牧场，由此观看景色美不胜收，接着驱车前往琉璃城堡，是一个散发着浪漫幻想气氛的玻璃主题公园。有世界首创的玻璃迷宫、世界最大的玻璃钻、玻璃墙、镜子湖水，以及意大利、捷克和日本等世界知名作家的作品。随后前往桔子园。济州岛的桔子可以说是水果中的上品，从古代开始就作为贡品被进贡给皇帝，在国内只有济州岛生产此柑桔。跟着专车到油菜花园看一片黄橙橙的美丽花园，在这里拍照是最美的！接着您可骑济州小马享受奔驰的乐趣。济州小马较为独特，虽与西洋马较为身驱娇小，但有强健的耐心与卓越的速度。随后至泰迪熊博物馆，该馆以熊为主题，展示”小玩具熊登场”的20世纪人类历史上的11件重大事件；这是一个老少皆宜的博物馆，大家不要忘了与世界知名的”泰迪熊”拍照留念。



# Travel GSH Pte Ltd

101 Upper Cross Street People's Park Centre B1-12 Singapore 058357

随后前往视觉艺术博物馆，您可亲自触摸所有的作品，不仅是单纯的拍照，而是您可自己做为作品监督；在3D画面作品的背景中成为演员演出。续程前往神奇之路体验失去地心引力的感受，到此的人都能体验最神奇的状况，那就是把车引擎关掉后，车还能驱上斜坡。

## 第六天 济州岛 Q 首尔 / 乐天世界(含门票及五项券) / 东大门 (早/晚餐)

今早，告别美丽的济洲岛，乘坐班机回首尔。首先前往世界最大的复合式室内游乐园，乐天世界。亦是电视剧“天国的阶梯”的拍摄场景。主要分为室内(乐天探险世界)以及盖在湖面上的 (魔幻岛)两个园区，并有三十余种尖端游乐设备供旅客尽情玩乐及魔术剧场大型舞台表演等，还有揉合自然及尖端科技表演等。而后前往韩国最热闹的东大门商场。商场内网罗了，各式各样物品，琳琅满目，从头到脚只要是您必要的东西都可以在这里找到。您可漫步闲逛或精心挑选一番，享受购物的乐趣，保证带给您深刻又难忘的回忆！

## 第七天 景福宫 / 青瓦台 / 高丽人参专卖店 / 紫水晶制造场 / 新村 / 化妆品店 / 涂鸦秀 (早/午/晚餐)

今早，市区游览，首先前往参观景福宫，首尔五个宫殿中历史最悠久的一个，雄伟壮观的建筑美是代表朝鲜时代的宫殿。接着专车经过青瓦台，为青色建筑物，是韩国目前总统府所在。之后前往高丽人参专卖店购买使元气旺盛的高丽人参，是保健医疗效能居世界之冠的药材。接着往韩国特产，紫水晶制造场，韩国紫水晶以颜色鲜明、光泽感好、透明度高等多优点而闻名于世。随后前往韩国价廉物美的化妆品店，萃取天然原料制成，送礼自用两相宜，让您从头到脚水当当。接着一起到新村逛街。在这里可以找到很多价廉物美的餐厅，小吃，服装店和气氛幽雅的咖啡厅，娱乐场所等。今晚大家一起观看涂鸦秀，是世界首个结合绘画与舞台的绝妙表演，结合电子音乐、灯光效果、丰富的素材、以及快速绘画技巧，90分钟的过程，像似魔术，其实是运用美术所创造的艺术，不论老少都能欣赏到绘画的乐趣与感动。

## 第八天 护肝宝专卖店 / 土产店 / 韩国 Q 新加坡 (早餐)

旅游韩国的最后一站，护肝宝专卖店。在告别韩国之前，先前往土产店采购韩国的各类土产等等。之后前往机场搭乘客机回返新加坡。希望您在韩国有个美好的回忆。



### ..特别餐..

- 1) 特殊风味大餐: 品尝代皇帝尊贵的养生鸳鸯御膳大餐。
- 2) 生猛海鲜大餐: 季节性生鱼片，海鲜火锅，海螺，凉拌海带，烤鱼，寿司，煎饼，季节小菜，沙拉等。
- 3) 人参炖鸡汤 + 鲍鱼。

\*备注: 中文版行程翻译自英文版本。如有差议，将以英文版本为标准。行程顺序或因当地非预期情况而需临时更改，以确保行程顺利进行，恕不预先告知。倘若滑雪度假村客满，我们将安排到首尔特五星级或同等级酒店住宿。